

From Nature With Love™

Bringing You the Best of Nature from Around the World™



*Bath Accessories for Beautiful Skin -
Inspired by Nature*



From Nature With Love is a supplier of high quality ingredients and accessories for the spa and skin care industries. Our extensive line of body brushes, sea sponges, plant fiber bath scrubs, and wooden accessories are designed to complement the natural bath and spa. Choose from our large selection of sisal, ramie, hemp, flax, loofah and wooden accessories to add "natural" interest to your retail displays, skin care products or gift sets.

We also carry an exciting, colorful line of children's bath and nylon accessories. Add a splash of color to your gift sets or product lines with our long lasting, nylon bath accessories.

Luxury with a cause...

Our body brushes, sea sponges and natural fiber accessories add spa-like luxury and pleasure to routine bath and skin care rituals. However, these accessories offer more than just luxury; routine use provides well known beauty and health benefits. Our skin is a living, breathing organ that needs proper care and cleansing to function at its best.

Stimulate Exfoliate Revitalize

Our natural fiber scrubs, sea sponges and boar bristle brushes gently exfoliate the skin and increase blood circulation, leading to a beautiful, healthy and radiant glow. Regular dry brushing with these gentle fibers removes dead skin, increases the effectiveness of moisturizers and allows new skin to surface. In addition, it stimulates sebaceous glands and can help ease dry skin conditions. Studies show that routine use of scrubs and brushes improves blood circulation, breaks up and eliminates cellulite deposits, and promotes the removal of accumulated toxins from the body.

From Nature With Love bath accessories and other products are available through www.fromnaturewithlove.com

From Nature With Love, 341 Christian Street, Oxford, CT 06478
Toll Free: (800) 520-2060 • Phone: (203) 267-6061 • Fax: (203) 267-6065

Brushes



Bristle Cellulite Combo Brush
 These combination brushes have soft bristles on one side and gentle cellulite pegs on the other to help exfoliate the skin and improve circulation to the skin.
 Dimensions: 17" long

Bristle Cellulite Round Combo Brush
 These gorgeous combination brushes have soft bristles with gentle cellulite pegs to help exfoliate the skin and improve circulation to the skin.
 Dimensions: 15.5" long, 4.25" diameter brush head





Curved Handle Brush

Dimensions: 10" long
 These are perfect bath brushes for medium to large size bath gift baskets.



Dark Curved Handle Brush

These stained bath brushes look beautiful in gift baskets and are great to have in the bathroom.
 Dimensions: 8.25" long



Oval Brush With Removable Handle

These long handled bath brushes with removable handle can be included in large to extra large gift baskets. The brush head can be used alone or attached to the handle for hard to reach areas.
 Dimensions: 16" long



Dark Oval Brush With Removable Handle

These stained bath brushes with removable handle look beautiful in gift baskets and are great to have in the bathroom. They can be used with the handle, as a back scrubber or without, as a hand held body brush.
 Dimensions: 16" long

8



13



14



15



11



12



1. **Heart Brush** Include these little heart shaped bath brushes in small to medium gift baskets. Perfect for Valentine's Day! Dimensions: 3.25" x 1"

2. **Round Brush With Hand Loop** Include these little round bath brushes in small to medium gift baskets. Perfect with any type of bath product. Diameter: 3.5"

3. **Dark Round Brush With Hand Loop** These stained body brushes look beautiful in gift baskets and look great with our other stained bath accessories. Diameter: 3.5"

4. **Round Body Brush With Short Handle** Length: 7 3/4", Width: 3 3/8", Depth: 1 3/8"

5. **Round Body Brush With Medium Handle, Type I** Length: 9 7/8", Width: 3 3/8", Depth: 1 3/8"

6. **Dark Short Handle Brush** These stained bath brushes look beautiful in gift baskets and are great to have in the bathroom. Length: 7.75"

7. **Dark Hair Brush** These stained hair brushes look beautiful in gift baskets and look great with our other stained bath accessories. Length: 6"

8. **Fancy Nail Brush** A simple wooden nail brush with straight bristles on both sides. Length: 3 3/4", Width: 1 1/8", Depth: 1 5/8"

9. **Foot Shaped Nail Brush** The perfect nail brush for pedicure baskets! Package along with a cooling foot scrub or an antibacterial, rejuvenating foot soak! Dimensions: 3.5" (L) x 2" (W) x 1.25" (D)

10. **Dark Foot Shaped Nail Brush** These dark stained nail brushes are perfect for pedicure baskets! Package along with a cooling foot scrub or an antibacterial, rejuvenating foot soak! Dimensions: 3.5" (L) x 2" (W) x 1" (D)

11. **Oval Nail Brush** This nail brush has a full side of straight bristles with a row of slanted bristles on the other side - convenient for cleaning under nails. Length: 3 3/4", Width: 1 1/2", Depth: 1 1/4"

12. **Teddy Bear Shaped Nail Brush** Length: 3 1/8", Width (head): 1 5/8", Width (feet): 3", Depth: 1 1/4"

13. **Small Hexagonal Complexion Brush** Length: 4 3/4", Width: 1 1/2", Depth: 1 1/8"

14. **Small Oval Complexion Brush** Length: 5 1/4", Width: 1 3/4", Depth: 1 1/4"

15. **Small Round Complexion Brush**

Flax Bath

Flax Terry Soap Bag This soft, flax soap bag creates a wonderful lather when a soap bar is placed inside the bag, and gently exfoliates the skin. Dimensions: 6" (L) x 3.75" (W)



Oval Flax Terry Pad

Include a soft flax pad with your natural skin care products for mild exfoliation in the bath. These gray flax terry pads look great in men's gift baskets.

Dimensions: 6.75" (L) x 5" (W)



Round Flax Terry Pad

Include a soft flax pad with your natural skin care products for mild exfoliation in the bath. These small pads are great for the face.

Diameter: 3.5"



Flax Terry Sponge

Include a soft flax sponge with your natural skin care products for mild exfoliation in the bath. These grey, flax terry sponges look great in men's gift baskets.

Dimensions:
6.5" (L) x 3.75" (W) x 1.5" (D)



Flax Towel

Include a soft flax towel with your natural skin care products for mild exfoliation in the bath. These small towels are nice to include in men's gift baskets.

Dimensions: 12.5" x 11.5"



Flax is another well known bast fiber. Its historical use as linen dates back to 3000 B.C.. The long fibers are contained within the stalk and grow in a complex process. Flax fiber is very versatile to work with and results in strong, durable and smooth textured fabrics. Flax terry provides gentle exfoliation when used in bath accessories and washcloths.



Pink Hemp Weave Glove

These soft, woven hemp gloves provide extra gentle exfoliation and add texture to gift baskets. Perfect for all-natural products!

Dimensions: 9" (L) x 7.5" (W)



Pink Round Hemp Weave Pad

These soft, round, woven hemp pads provide extra gentle exfoliation and add texture to gift baskets. Perfect for all-natural products!

Diameter: 4"



Hemp Weave Sponge Ball

These sponge balls are covered in woven hemp and are great for gentle exfoliation.

Dimensions: 3.5" (D) x 2.25" (H)



Large Oval Hemp Waffle Weave Pad

These soft, oval, waffle weave hemp pads provide extra gentle exfoliation and add texture to gift baskets. Perfect for all-natural products!

Dimensions: 6.75" (L) x 5" (W)

Hemp Bath



Hemp Waffle Weave Hand Sponge

These soft, woven hemp sponges provide extra gentle exfoliation and add texture to gift baskets. Perfect for all-natural products!

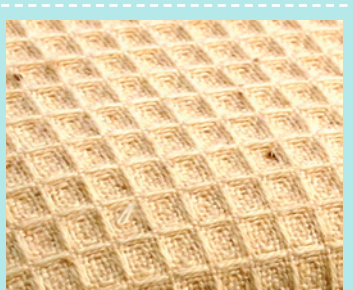
Dimensions: 5.25" (L) x 5" (W) x 2.25" (H)



Small Round Hemp Waffle Weave Pad

These soft, round, waffle weave hemp pads provide extra gentle exfoliation and add texture to gift baskets. Perfect for all-natural products!

Diameter: 3"



Hemp (*Cannabis sativa*) is a very popular bast fiber plant similar in properties to ramie, flax and jute. The stalk of the plant yields long, durable primary fibers that are easily woven into soft, highly absorbent fabrics. Hemp fiber possesses natural anti-mildew and antimicrobial properties making it a great fiber for bath accessories.

Loofah Bath

Flower Shaped Loofah Pad

These flower shaped, exfoliating loofah pads are perfect for gift baskets. Loofah on both sides.

Diameter: 5.75"



Teddy Bear Shaped Loofah Pad



Loofah Bar 4"



Loofah Bar 6"



Loofah Bar 8"



Loofah Bar 11"



Loofah is the dried skeleton of a gourd from the Cucurbitaceae family. Loofahs have been cultivated for centuries, in warmer regions, for use as natural body and cleaning scrubs. Loofah products should be dried well in between uses, and sanitized or replaced on a frequent basis to avoid bacterial growth.



Large Oval Loofah Terry Pad

Length: 6"
Width: 4 1/4"



Small Loofah Disc

Diameter: 2 3/8"



Round Loofah Pad

These small round, exfoliating loofah pads are perfect for gift baskets. Terry on one side and loofah on the other.

Diameter: 3.25"



Medium Loofah Disc

Medium size loofah discs provide moderate exfoliation.

Diameter: 3"



Large Loofah Disc

Large size loofah discs provide moderate exfoliation.

Diameter: 4"



Duck Shaped Loofah Pad

Length: 5"
Width: 5"



Black Rimmed Foot Roller

Length: 7 3/4"
Diameter: 1 3/4"



Wooden Handle Pedi Groomer

Length: 7"
Width: 1 3/8"
Depth: 1/4"

Foot Tools

Create a pedicure basket by including a scented foot scrub, pumice stone and/or any of our other pedicure accessories.

Ramie Bath



Ramie Terry Scrub Ball

Soft ramie terry provides gentle exfoliation in the bath and looks great with your natural skin care products.

Diameter: 3.5"
Height: 2"



Ramie Bath Pouf

These beautiful ramie poufs look great in gift baskets and provide gentle exfoliation.

Diameter: 5.5"



Ramie Washbag

These beautiful ramie soap bags look great in gift baskets and provide gentle exfoliation and wonderful lather!

Dimensions: 8.25" (L) x 5" (W)



Rectangle Ramie Pad

These beautiful thick ramie scrub pads look great in gift baskets and provide gentle exfoliation.

Dimensions:
6.5" (L) x 4.75" (W) x 1" (D)



Ramie Towel

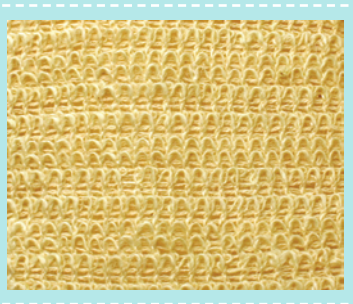
Length: 90cm
Width: 30cm



Ramie Terry Glove With Cuff

Soft ramie terry provides gentle exfoliation in the bath and looks great with your natural skin care products.

Dimensions: 9.5" (L) x 6.5" (W)



Ramie (*Boehmeria nivea*) is a flowering plant from the nettle family and is native to Eastern Asia. Ramie has been cultivated as a fiber crop for over six thousand years and has been used to make fabric. Ramie adds a silky lustre to fabrics and is usually blended with other fibers. Ramie fiber makes soft, gentle exfoliating bath accessories.

Pumice Products

Pumice stone is a naturally aerated foamy substance that forms during volcanic activity and floats on top of lava. It is actually considered to be a type of glass because it has no crystal structure. It hardens into a lightweight rock that can be ground and used as a gentle abrasive. It is commonly used as a foot exfoliator.



Pumice on Rope

These pumice stones look great in any bath gift basket.

Dimensions:
3.75"(L) x 2"(W) x .75" (D)



Pumice Brush Combo

This pumice bristle combo brush is a great foot tool to add to any skin care basket or home spa basket. Goes great with a cooling salt scrub for the feet!

Length: 7"



Oval Ramie Wash Pad

Length: 5 3/4"
Width: 4 1/4"
Depth: 1/2"



Round Ramie Pad

These beautiful round ramie pads look great in gift baskets and provide gentle exfoliation.

Diameter: 3.25"



Oval Ramie Terry Pad

These beautiful oval ramie pads look great in gift baskets and provide gentle exfoliation.

Dimensions: 6.25" (L) x 4.5" (W)



Oval Ramie Terry Pad

Soft ramie terry provides gentle exfoliation in the bath and looks great with your natural skin care products.

Dimensions: 6" (L) x 4.25" (W)



Ramie Terry Backstrap

Soft ramie terry provides gentle exfoliation in the bath and looks great with your natural skin care products.

Dimensions: 11.5" (L) x 4" (W)

Sisal Bath



Small Round Sisal Pad

These sisal pads provide a little extra exfoliation and look great in gift baskets.

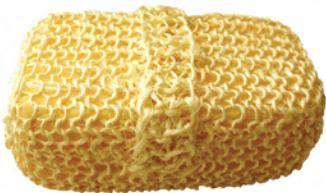
Diameter: 4"



Small Natural Sisal Terry Round Pad

These sisal pads provide a little extra exfoliation and look great in gift baskets.

Diameter: 2.75"



Sisal Sponge With Hand Strap

Length: 6"
Width: 4"
Depth: 2 1/4"



Sisal Glove Without Cuff

These sisal gloves provide a little extra exfoliation and look great in gift baskets.

Dimensions:
8.25" (L) x 7.75" (W)



Sisal Sponge Ball

These sponge balls are made with beautiful sisal rope on the outside and foam sponge inside. They look great in any type of skin care basket.

Dimensions:
3.5" (Diameter) x 2" (Height)



Sisal Sponge With Handle

Sisal back brushed are beautiful on their own or in a large gift basket.

Dimensions:
16.5" (L) x 4" (W) x 2.5" (D)



Sisal Scrub Ball

Length: 2 1/2"
Diameter: 3 1/2"



Sisal or *Agave sisalana*, is a plant that yields a strong, durable fiber commonly used to make rope. Sisal probably originated in Mexico but became widely cultivated in the 19th century. Out of the agro-based fibers, sisal has the highest production in the world. Sisal fiber is the smoothest of all natural fibers and is easily woven into fabric. Sisal products make eye-catching, durable scrubs for the bath and spa.



Rectangle Sisal Pad

These sisal pads provide a little extra exfoliation and look great in gift baskets.

Dimensions:
6.75" (L) x 4.75" (W)



Oval Natural Trim Sisal Pad

These oval pads are made with beautiful sisal rope on one side and terry on the other. They look great in any type of skin care basket.

Dimensions: 6.5" (L) x 4.75" (W)



Oval White Trim Sisal Pad

These oval pads are made with beautiful sisal rope on one side and terry on the other. They look great in any type of skin care basket.

Dimensions: 6.5" (L) X 4.75" (W)



Oval Sisal Pad

These sisal pads provide a little extra exfoliation and look great in gift baskets.

Dimensions: 6" (L) x 4.25" (W)



Large Sisal Wash Pad

Diameter: 5 1/2"
Depth: 1 3/4"



Small Sisal Wash Pad

Diameter: 4"
Depth: 1 1/2"

1. Heart Shaped Peg Cellulite Brush

Length: 4 5/8", Width: 4 1/2", Depth: 1 1/2"

2. Dark Oval Peg Cellulite Brush With Strap

These stained cellulite massagers are wonderful for massage gift baskets. The soft massaging pegs help improve circulation to the skin and aid in the removal of toxins from the body.

Dimensions: 5.75" (L) x 3" (W) x 1.5" (D)

3. Oval Peg Cellulite Brush With Strap

This cellulite brush with strap is great for massaging the body to increase circulation and the removal of toxins from the body.

Dimensions: 5.25"(L) x 3"(W) x 1.75"(D)

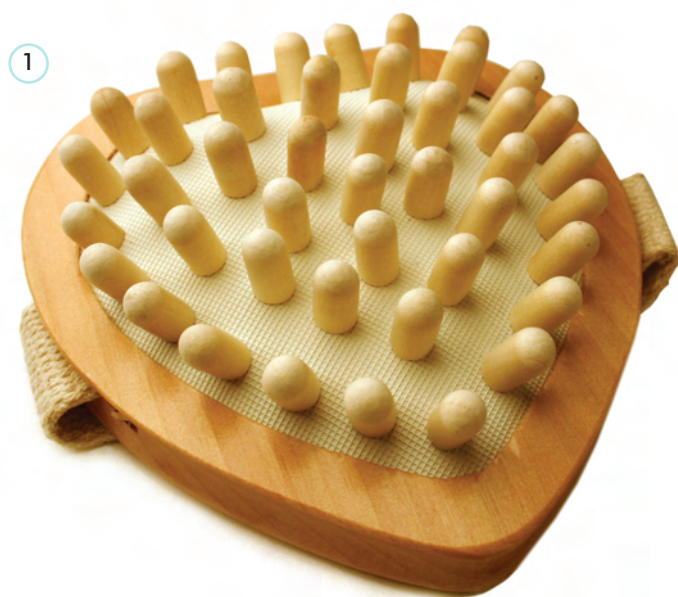
4. Black Rimmed Foot Roller

Length: 7 3/4", Diameter: 1 3/4"

5. Oval Peg Cellulite Brush With Strap

Length: 5 1/4", Width: 3", Depth: 1 5/8"

Massage Tools



Sea Sponges



Atlantic Silk Sponge 1 1/2"



Atlantic Silk Sponge 2 1/2"



Natural Grass Sea Sponge 6"



Atlantic Silk Sponge 3"



Natural Grass Sea Sponge 4"



Mediterranean Zimoca Silk Sponge 1 1/2"



Mediterranean Zimoca Silk Sponge 2 1/2"



Natural Bleached Sea Sponge 4"



Natural Bleached Sea Sponge 5"



Sea sponges are harvested from the ocean and come in various forms. Their soft filaments provide gentle cleansing without abrasion to the skin. They are very durable and do not absorb odors.

Soap Dishes

Our wooden soap dishes are a perfect complement for your handcrafted soaps. They are made from schima superba or pine woods. Although some are laquered, they should not be kept in the shower as they may discolor and warp. We carry a range of different shapes and styles but please feel free to let us know if you are looking for something specific.



Ladder Style Soap Dish

Length: 4 1/4", Width: 3 1/2", Depth: 3/4"



Ladder in Tray Soap Dish

These gorgeous ladder soap dishes with trays are perfect for any chunky rectangular soap bar. These are quickly becoming our most popular soap dish!

Dimensions:
5.5" (L) x 3.875" (W) x 1" (D)



Solid Soap Dish With Drainage Holes

Length: 5 1/4"
Width: 3 5/8"
Depth: 3/4"



Dark Ladder Style Soap Dish

These stained ladder style soap dishes are so popular. They look great with dark, earthy tone natural soap bars.

Dimensions:
4.25" (L) x 3.75" (W) x .75" (D)



Soap Dish With 4 Grooves

Length: 4 1/8"
Width: 3"
Depth: 3/4"



Beveled Edge Wooden Soap Dish

Our original and most popular soap dish.

Length: 4 1/4"
Width: 2 1/2"
Depth: 3/4"



Crate Style Soap Dish

This is one of our best-sellers for large soap bars.

Length: 5 1/4"
Width: 4"
Depth: 1"



Solid Soap Dish With Square Grooves

Length: 4 1/4"
Width: 2 3/4"
Depth: 5/8"



Oval Drainage Soap Dish

These oval soap dishes allow water to drain through and are perfect for oval soap bars.

Dimensions:
4.875" (L) x 3" (W) x .5" (D)



Round Drainage Soap Dish

These small round soap dishes allow the water to drain through and are perfect for small, round soap bars or guest soaps.

Diameter: 3.5"
Height: 5/8"

Mirrors

Dark Round Mirror With Handle

These stained mirrors look beautiful in gift baskets and look great with our other stained bath accessories.

Length: 7.5"

Width: 3.75"



Shaving Tools



Large Handle Shaving Brush

Length: 4 1/8"

Diameter: 1 1/2"



Straight Handle Wooden Razor

Length: 4 1/2"

Width: 1 5/8"

Miscellaneous



Jute Weave Washcloth

A gentle exfoliating washcloth.
Makes a great soap wrap!
10" x 10"



Wooden Scoops

Our wooden scoops hold approximately 1 tablespoon of salt or other ground/powdered ingredients. The scoop is 3" long. Tie these onto tin tie bags or jars using ribbon or raffia or include them in your gift baskets with salts and milk baths.

Nylon Bath

These beautiful bath poufs add subtle color to your bath gift baskets.



Blue Nylon Shadow Pouf



Champagne Nylon Shadow Pouf



Peach Nylon Shadow Pouf



Rose Nylon Shadow Pouf



Mint Nylon Shadow Pouf



Aqua Nylon Bath Pouf



Assorted Nylon Bath Pouf



Blue Nylon Bath Pouf



White Nylon Bath Pouf



Pink Flower Sponge

Add a splash of color to your gift baskets with these cute little flower sponges. They provide gentle exfoliation and look beautiful in the bathroom.

Dimensions: 3.25" (D)



Yellow Nylon Bath Pouf



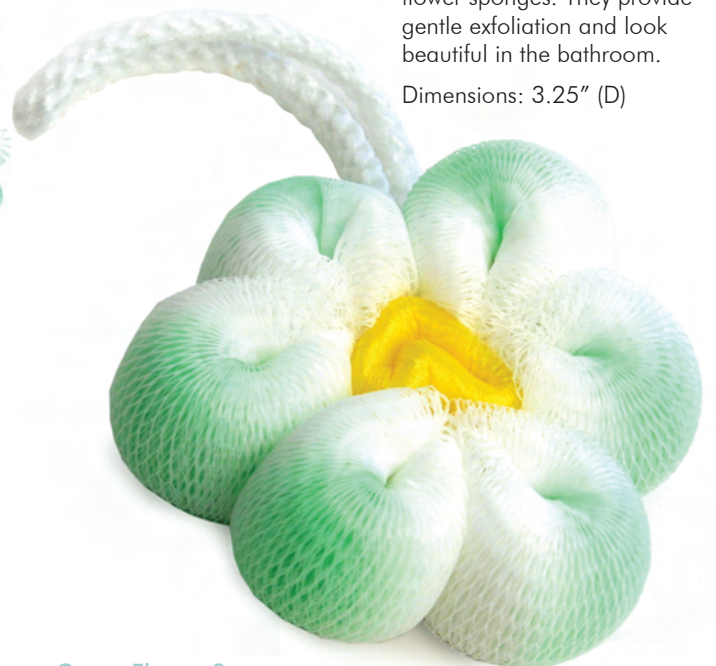
Sea Green Nylon Bath Pouf



Pink Nylon Bath Pouf



Light Purple Nylon Bath Pouf



Green Flower Sponge

Nylon Bath

Length: 8 1/4"

Width: 5"

Our durable nylon bath gloves are sold in pairs. They help stimulate circulation while they gently exfoliate the skin. Their massaging action is invigorating and they create wonderful lather when used with shower gel! Include them in your gift baskets with a bottle of bubble bath or shower gel or with your favorite hand made soap.



Blue Nylon Bath Gloves



Pink Nylon Bath Gloves



Cream Nylon Bath Gloves



Yellow Nylon Bath Gloves



Orange Nylon Bath Gloves



Mint Green Nylon Bath Gloves



White Nylon Bath Gloves



Magenta Nylon Bath Gloves

Children's Bath



Kids Monkey Pouf



Kids Rabbit Pouf



Kids Aqua Animal Pouf



Kids Blue Dolphin Pouf



Kids Orange Bunny Pouf



Kids Pink Pig Pouf



Kids Bear Pouf



Nylon Duck Bath Pull



Nylon Frog Bath Pull



Nylon Monkey Bath Pull



Nylon Pig Bath Pull



Nylon Bear Bath Pull



Kids Pig Pouf



Kids Frog Pouf

